

# Petroleum Tanker Product Range

1300 134 651 | [dixonvalve.com.au](http://dixonvalve.com.au)

# Petroleum Tanker Products

## DIP & FILL FITTINGS & ACCESSORIES



DBDA80  
DBFA80



DBDT80-2200

## EMERGENCY FOOTVALVE & ACCESSORIES



DBFVA0210



DBFVA0210K1

## FIRE EXTINGUISHERS



## PRODUCT INDICATOR



DBPI120

## SIGHT GLASSES



DBSGF4-25



5200-SFI-3

## DUST CAP



AL400DC-L

## API VALVES



5204A



5204

## DROP ELBOWS / ELBOW INLETS



6000ASA

## 4500 SERIES DROP ADAPTORS



4540



4540SGV

## API DUST CAP ASSEMBLY



5000-24



5000-25

## SOCKETS & DUMMY PROBES



FT304A



FT208LH



FT155A

## DUST CAPS



AL400DC-L



ALDC400DC

**TOP OPERATOR CAMLIFT & LIFTING WIRE**



DBC0402



DBLWKIT

**VAPOR VENTS**



DBVR6410



DBVH090

**OVERFILL PROBES**



FT150A



FT151

**AIR INTERLOCKS VALVES**



5000AIV

**VAPOR VALVES**



VR4000



VR4100FNG

**VAPOR CAPS**



VR4050AL



VR4050PL

**GROUNDING BALL & BOLT**



FT450



FT451

**TTMA FLANGES & ROUND FLANGE GASKETS**



TTF4-100AL



400-ALT-SS

**TTMA BUTTERFLY VALVES**



WD401ALVB



WD406ALVB

**LOCKING FILL CAPS**



SA4050

**BULK DELIVERY NOZZLE**

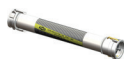


114DBSPT

**COMPOSITE HOSE ASSEMBLIES**



C1000100FF



CVRH100FF

**K-SERIES ISO-A COUPLINGS**



K8BF8-G



8KBF8-G

**TUBE DOORS & STEPS**



TDF7

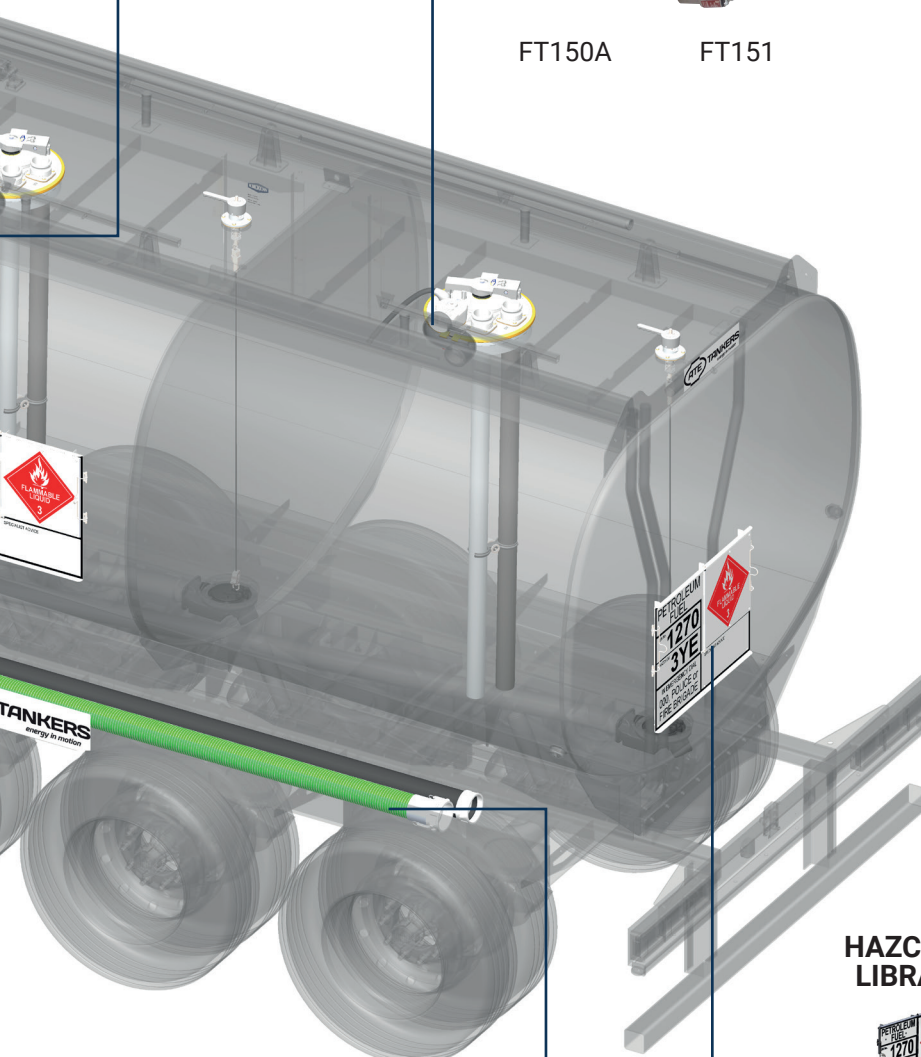


15S

**HAZCHEM LIBRARY**



DBHSL



## Terminal Overfill



### Applications:

Installed on the gantry to control the loading process of petroleum fuels or other hazardous liquid into cargo tanks.

### Features:

- Automatically switches between 2-wire or 5-wire type sensors
- Compatible with analogue 2-wire thermistor type sensors
- Redundant relay outputs prevent single-point failures
- Ground verification

### Approvals:

- IECEx Certification
- Meets API RP1004 and EN13922 standards
- Suitable for Class I, Division 1, Group CD and Class I, Zone 1, Group IIB

Contact customer service for applicable Rack Cord and Junction Box details.

## Terminal Loading



### Applications:

Combined with API adaptors, these couplers are suitable for rail car and tank truck loading and unloading.

### Features:

- Modular design allows various face seal combinations to be compatible with different alternative fuels, performance levels and applications
- Fully interlocked collar prevents fitting from opening when disconnected and from being disconnected while opened
- 4" TTMA inlet mounting flange connection
- Ball-end handle for easy and comfortable operation
- No special tools needed for maintenance

### Materials:

- Body and Poppet: 356 T6 Aluminium anodized hard-coat
- Cam: stainless steel
- Seals: FKM-GFLT standard; Baylast™, EPDM, Fluoroelastomer, FKM-B, HiFluor®
- Link, shaft, pin, crank: Hardened 17-4PH stainless steel
- Handle: Aluminium, stainless steel

## Swivels



### Applications:

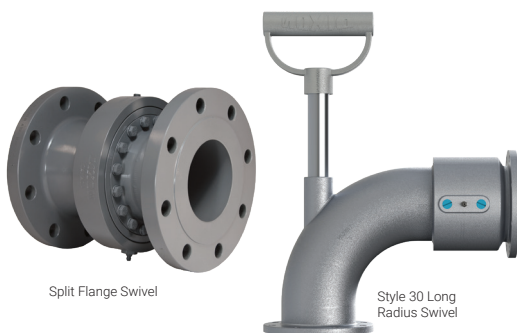
Used wherever a leak-proof swivel connection is needed. Industries range from petroleum, petrochemical, fluid and dry bulk transfer and many more.

### Features:

- Full 360° rotational movement
- Wide spacing between dual ball bearing raceways ensures greater load-bearing capacity
- Radius elbow design ensures a smooth flow pattern
- Hydrostatic testing is performed on all swivels
- Precision-machine design ensures alignment

### Materials:

- Stainless steel
- Steel
- Aluminium



## Loading Arm



### Applications:

Used for the transfer of liquids and dry bulk materials in refineries, chemical plants, rail terminals, truck terminals, tote and drum filling.

### Features:

- 3 options of sealing swivels: O-ring, v-ring and split flange
- Wide variety of end configurations available
- Torsion spring counterbalance with steel housing and multiple grease ports
- Engineered with easy service in mind

### Materials:

- Hardened carbon steel, stainless steel and aluminium
- Seals: Buna, EPDM, FKM-A and B, PTFE and Baylast™

### Sizes:

- 2", 3" and 4"

## API Valves



### Applications:

API Valves are used for bottom loading and unloading of petroleum tankers.

### Features:

- Ergonomically curved handle that opens with a short 62-degree stroke
- Fixed or removable handle available
- Maintenance can be performed without removing the valve from the tanker
- Interchangeable with competitor product made to the same specification
- Cast anode connection point to combat galvanic corrosion
- Biofuel compatible, up to E100 (Ethanol 10% and B100 - BioDiesel 100%)

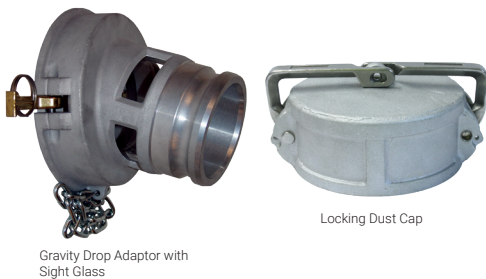
### Materials:

- Aluminium body and handle
- Anodized hard coat aluminium nose ring
- Baylast™, FKM and PTFE seals
- Acrylic full-body sight glass
- Stainless steel hardware

### Approvals:

- API RP-1004

## Drop Adaptors



### Applications:

To be used in conjunction with the standard API valve. The gravity drop adaptor features an industry standard API female connection designed to couple directly to the standard API valve leaving either a 3" or 4" male camlock adaptor.

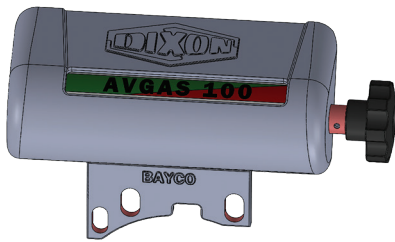
### Features:

- 3" or 4" connections
- Quality cast aluminium body
- Various seal options available
- Drop adaptors have an optional sight glass
- Standard one-piece body

### Materials:

- Cast aluminium body
- Bronze cam arms
- Stainless steel pin and finger rings

## Indicators



Product Indicator

### Applications:

Product indicators are used to display the name of the product in the corresponding tanker compartment.

### Features:

- Mounts directly to 4" TTMA flange
- All label colouring is in accordance with SLP recommendations
- Diesel - Avgas 100 - ULP + E
- Ethanol
- Kerosene - Jet A1 - E-85
- ULP91 - Hi-Octane - Blank
- Supplementary labels available

## Side Seal Elbow



Side Seal Drop Elbow



Male Elbow Inlet



Female Elbow Inlet

### Applications:

The side-seal drop elbows provide easy quick connection and disconnection to discharge hoses from a road tanker to a fill point on underground storage tanks, allowing for quick and safe product transfer. Spring-loaded levers allow the elbows to snap on securely to a side seal tight fill adaptor with minimal pressure. For use with standard 3" and 4" side seal style fill collars only.

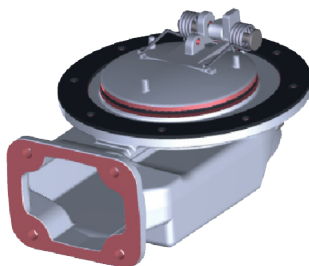
### Features:

- Modular, easy repair, bolt-on construction
- Comes with acrylic sight glass
- Buna seals and bronze arms
- Choice of 3" or 4" inlets
- Available with anti-spill sleeve

### Materials:

- Body - Aluminium
- Levers - Bronze
- Sight Glass - Acrylic
- Seal - Baylast™

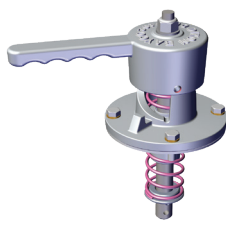
## Footvalve and Accessories



Emergency Footvalve



Lift Wire Assembly Kit



Manual Camlift Assembly

### FOOTVALVE

#### Applications:

Dixon Bayco® emergency valves are designed for use on road tankers to facilitate safe and efficient loading and discharge of tank contents.

#### Features:

- Quick action high lift sequentially operated pneumatic ram and can be manually operated
- Main body shear groove design and can be easily removed for routine maintenance

#### Materials:

- Aluminium construction
- Stainless steel shaft and roller
- Steel springs and fasteners

### ACCESSORIES

#### Applications:

Dixon Bayco® Camlifts are designed for use on road tankers specifically where opening and closing of the emergency valves are required from the tanker walkway.

#### Features:

- Manual cam lift assembly with gasket and fasteners
- Quick action high lift mechanism ensures maximum emergency valve opening
- Designed to interchange with other brands commonly found in the Australian market
- Can be mounted directly to tanker walkway or separate weld in flange

#### Materials:

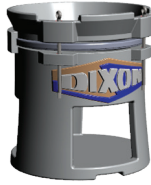
- Aluminium construction
- Stainless steel wire



## Dip and Fill



Fill Blanking Plate



Dip Tube Guide



Steady



Dip or Fill Adapter



Dip Tube

### Applications:

Dixon Bayco® fill tube and dip tube adaptor kits are designed for use on tanker compartments fitted with dip and fill fittings. Dip and fill tube blank plates are used where tankers are not fitted with fill tubes.

### Features:

- Designed to interchangeable with other brands commonly found in the Australian market
- Mounts direct to manholes or tanker walkways

### Materials:

- Aluminium construction
- SS Fasteners
- Cork/ Buna gasket

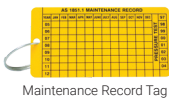
## Fire Products



ABE Extinguisher



PVC Extinguisher Bag



Maintenance Record Tag



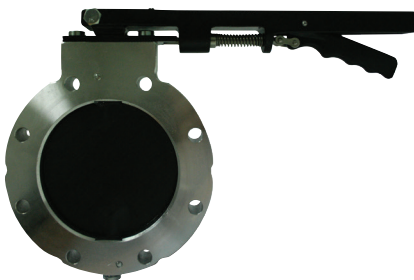
Heavy Duty Vehicle Bracket

### Applications:

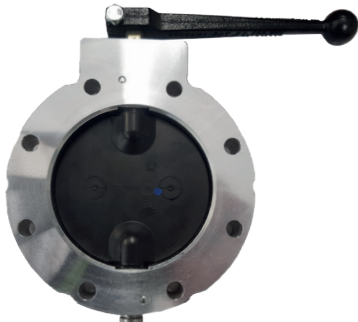
Used on the side of the tanker in case of an emergency, the following products can be found on the tanker:

- ABE Extinguishers
- Heavy duty Vehicle bracket
- Tag for testing
- PVC Coated bag

## TTMA Valves



Metered Wet-R-Dri Valve



Detent Wet-R-Dri Valve

The butterfly valve is a lightweight and compact quarter-turn in-line stop valve. This versatile valve is widely used for liquid, gaseous or dry products and is available in a variety of sizes and styles.

### MANUALLY OPERATED TTMA METERED WET-R-DRI VALVE

The manual metering/locking valve provides an eight-position metering locking handle, which holds the disc in the desired position.

### MANUALLY OPERATED TTMA DETENT WET-R-DRI VALVE

The manual detent model provides a positive stop in the open and closed position, as well as a detent spring and ball which assist in holding the disc in the open or closed position.

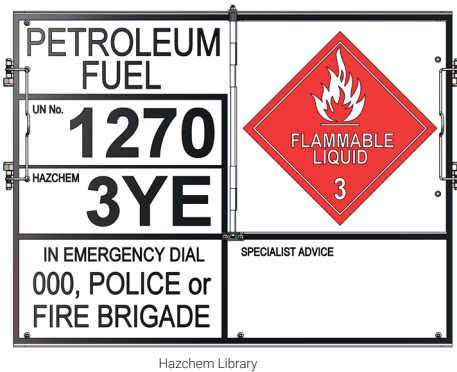
### Features:

- Can be mounted in any position with the handle located for easy operation
- Standard right-hand operation by turning handle quarter turn counter-clockwise and left-hand operation
- Bolt pattern matches TTMA piping flange dimensions

### Materials:

- Body: Aluminium, cast iron or stainless steel-lined
- Disc: FKM-B coated

## Hazchem Library (EIP)



Hazchem Library

### Applications:

Hazchem library signs (EIP - Emergency Information Panel) are used on vehicles and storage containers to display the fact that they are storing or transporting dangerous chemicals or substances.

### Features:

- Lightweight
- Spring clips on each side to secure in place
- Rubber buffer to prevent vibration
- Replaceable hinged panels
- Capacity to display up to 4 dangerous goods
- Stainless steel accessories

### Materials:

- Aluminium construction

## Nozzles



DEF Automatic Shutoff Nozzle (ADBLUE)

Pressure Nozzle for Bulk Delivery

Big Mouth™ Diesel Nozzle

### Applications:

A large range of nozzles from standard utility automatic and manual shutoff, used for diesel, fuel and AdBlue®.

### Features:

- 3/4" inlets up to 1 1/2" inlets
- Colour coded options
- Swivels available
- Auto shutoff

### Approvals:

- UL listed approvals as applicable

### Materials:

- Aluminium body
- Nylon hose guard

## Tank Truck Overfill



Overfill Probe

10-Pin 4J Socket

Truck Monitor

### FLOTECH™ REPLACEMENT PROBE

The FT150 2-wire probe is electronically and mechanically compatible for drop-in replacement of commonly used 2-wire probes with black and white wires. The FT150 provides the fast response and reliability of optic technology.

### Features:

- Fail-safe self-checking circuits and designed to fail in a no-load mode
- Compatible with all 2-wire systems built to the API RP 1004 standard
- Prism is sealed with an o-ring to prevent prism leaks
- Aluminium and stainless steel faceplates and probes

### Approvals:

- IECEx Certification

### FLOTECH™ SOCKETS

Flotech™ sockets allow the transfer of the electronic signal from the terminal control monitor to the tanker and return. Sockets will vary depending upon terminal equipment and regional regulations.

### Features:

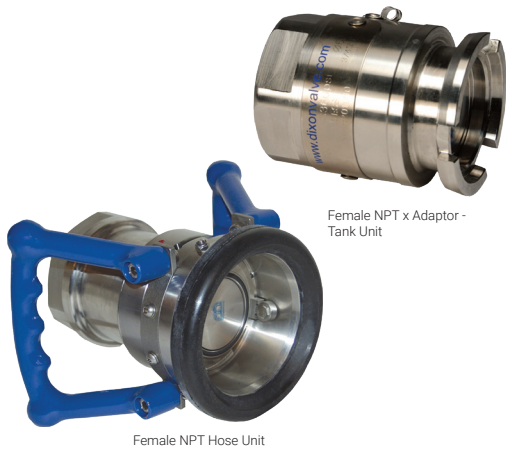
- 4 bayonet-style J-slots fixing to industry standard
- 10 pin as standard
- Allows for overfill protection with added ground assurance
- Sufficient room to easily install and mount dummy probe as required in 2-wire systems
- Compatible with terminal product manufactured to EN13922 and API RP1004

Refer to our website for all available options





## Manntek Dry Disconnects



### Applications:

For industrial process plant, road and rail tankers, diesel refuelling etc. Recommended for all types of bulk liquid product transfer.

### Features:

- Coupler has a built-in swivel. Riveted piston pin to minimise the risk for failure under extreme pressure conditions
- Adaptor (Tank Unit) has a conical valve seat to eliminate the risk for 'piston blow out'
- PTFE bearing between the piston shaft and the piston guide to eliminate the risk for seizure

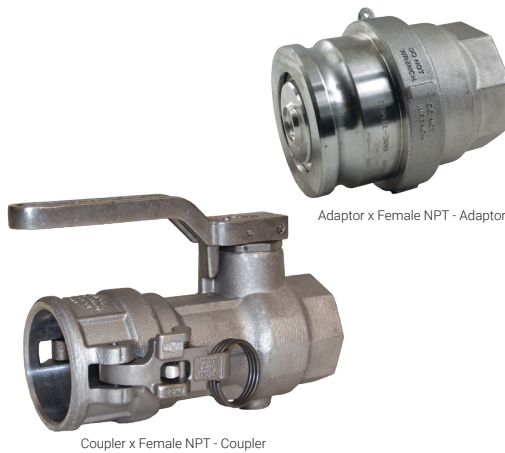
### Materials:

- 316 Stainless steel
- Anodised Aluminium
- Brass / Gunmetal

### Options:

- NPT or BSP

## Bayco® Bayloc® Dry Disconnects



### Applications:

The Bayco® dry disconnect helps prevent spillage from normal to accidental disconnects. It has a spring-loaded sealing device designed to 'snap' closed should the valve become disconnected with the poppet open, significantly limiting liquid loss.

### Materials:

- Heavy-duty stainless steel crank and link (Coupler)
- Stainless steel investment cast handles (Coupler)
- Aluminium fittings have stainless steel internals (Coupler)
- Aluminium fittings have aluminium nose piece and brass piston (Adaptor)
- Stainless steel corrosion resistance is equivalent to 304 stainless steel (Adaptor)

### Note:

Compatible with most cam and groove style dry disconnects. Fully interchangeable with Kamvalok (OPW trademark) style fittings.

## Bayco® Bayonet Style Dry Disconnects



### Applications:

Ideally suited for the spill-free transfer of petroleum products such as fuel oil, lube oil blending and tank truck delivery and the spill-free fueling of heavy equipment, trucks, buses and locomotives.

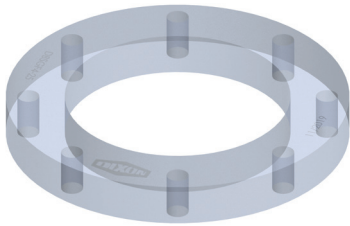
### Features:

- Valve handle interlocked to coupling mechanism
- Leakage on disconnect < 1.0CC
- Maximum pressure rating 85 PSI at 21° C
- Coupling rotation at 20°
- Swivels: straight or 90°
- Outlet threads: 2" or 3" NPTF

### Materials:

- Body: Aluminium black anodize hard coat finish
- Seals: Viton® or Buna
- Internals: stainless steel internals

## Accessories



Sightglass



TTMA Flange x  
Female NPT Adaptors



Gasket



Locking Dust Cap

### TTMA SIGHTGLASS FLANGE

TTMA Sight glass flanges allow for visual identification of the product in the run down piping prior to the opening of the API valve. The TTMA pre-drilled holes are too standard so the unit will fit behind an API adaptor as well as a Butterfly Valve.

#### Material:

- Acrylic

#### Specifications:

- Maximum pressure: 1000kPa
- Maximum temperature: 70°C (158°F)
- Fully machined to precise tolerances
- Batch marked for traceability

### ACCESSORIES

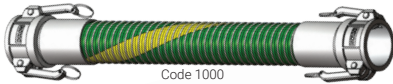
A wide range of accessories available for your tank truck requirements:

- TTMA Flanges and Gaskets
- Dust caps and plugs

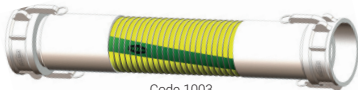
## Hose and Hose Assemblies



VRH Hose



Code 1000



Code 1003



Vapour Recovery Coupler  
Camlock



Coupler x Hose Shank with  
Ferrule

### FUEL TRANSFER COMPOSITE HOSE

A range of anti-static suction and discharge composite hose assemblies designed for use on plant or road/rail tankers. Hose construction is extremely flexible for ease of handling yet remains robust, hardwearing and cost-effective. A comprehensive range of fittings and hose assembly services are available.

- Code 1000 / 1003 - Fuel
- VRH - Vapour Recovery
- Sizes range from 1" - 4"
- Available in component form or as a fitted assembly - Tested and Certified

#### Materials:

- High strength polypropylene films and fabrics
- High density polyethylene film reinforcements
- Polyvinyl coated polyester fabric
- Galvanised outer and inner wire
- Aluminium outer and inner wire
- Poly coated steel inner wire

## Quick Couplings



Female Thread Nipple



Female Thread Coupler

ISO7241 Series A

#### Applications:

Used for a wide variety of applications including waste trucks, hydraulic hand tools, transport/trailers, offshore, deep sea, construction, industrial and chemical applications.

#### Materials:

- Steel, stainless steel

### ISO7241 SERIES A

#### Features:

- 100,000 impulse cycle rating in connected or disconnected states
- Redesigned compact profile
- Stainless steel balls, retaining rings and springs maximise corrosion resistance and extend the service life

### TR-SERIES TEMA INTERCHANGE

#### Features:

- Stainless steel balls, retaining rings and springs maximise corrosion resistance and extend the service life
- Steel componentry is plated using ROHS-compliant trivalent chrome
- Steel coupler sleeves are hardened to resist deformation and maximise service life

#### Seal Components:

- Nitrile (Buna-N) seals are standard, providing a temperature range of -40°C to 121°C (-40°F to 250°F)
- Valve seals are crimped in place to maintain integrity during excessive flow conditions and pressurised connection



## Cam and Groove



Aluminium Lockable Dust Cap



Dust Cap



Buna Fuel Gasket



Female Coupler x Hose Shank Camlock



Vapour Recovery Coupler Camlock

### Applications:

The Dixon Cam & Groove coupling is a quick connect coupling for use on hose, pipe, tubing and tanks conveying a wide variety of liquids, dry bulk materials and vapours.

### Features:

- Leakproof connection
- Easy to use - no tools required
- Male & Female BSP threads
- Male & Female NPT threads
- Size range from 15mm - 200mm

### Materials:

- Aluminium
- Brass
- Stainless Steel
- Polypropylene
- Hastelloy

## Arctic Strainers



SISO Strainer



BISO Strainer

### Applications:

Suitable for applications where superior corrosion resistant stainless steel is required to filter liquids. Commonly used to strain liquids, including waste/recycled oils, water, chemicals and corrosive liquids.

### Materials:

- Electro-polished AISI 2205 cast stainless steel

### Features:

- Offset outlet creates swirling action for improved performance
- Quick and easy access for cleaning, no tools required
- BSP thread inlet and outlet, flanged strainers available on request
- Bonding lug to combat galvanic corrosion

### Options:

- 316 stainless steel bucket
- Clear polycarbonate or solid lid

### Sizes:

- BISO - 1" to 6" Inlet / Outlet
- SISO - 1" to 4" Inlet / Outlet

## Vapour Vent and Vapour Vent Hose



Vapour Recovery Vent - Sequential Air Operated



Vapour Vent Hose

### VAPOUR RECOVERY VENT - SEQUENTIAL AIR OPERATED

#### Applications:

Vapour recovery vents are designed for use on road tankers specifically set up for bottom loading applications to allow adequate venting during loading or unloading.

#### Features:

- Mounts directly to manholes or tanker walkways
- Designed to interchange with other manufacturers
- Inward opening poppet ensures compartment pressure is maintained and product retention during transit
- The valve may be installed to operate in sequence with other pneumatically controlled devices such as emergency valves or open independently by plugging the air out port

#### Materials:

- Aluminium construction
- Stainless steel piston and fasteners

### VAPOUR VENT HOSE

#### Application:

This anti-static rubber hose is designed for vapour discharge for fuel tank truck hatch vapour vents.

#### Features:

- 2 x Copper wires

