





# Minsup® A-Type Claw Couplings



The Right Connection®



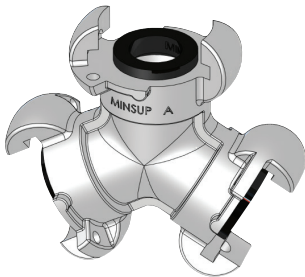
Product Code: AD05

Part Number	Description
<a href="#">AWR4</a>	Natural Rubber A Type Standard Seal
<a href="#">AWR4V</a>	FKM A Type Standard Seal



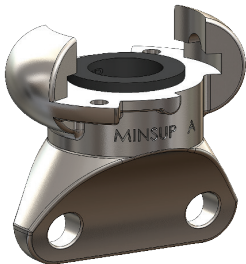
Product Code: BA01

Part Number	Description
<a href="#">05/010/02/000</a>	Safety Locking Pin - zinc plated mild steel
<a href="#">05/010/02/000B</a>	Safety Locking Pin - zinc plated mild steel (box quantity 1000)
<a href="#">05/010/02/000SS</a>	Safety Locking Pin - 316 stainless steel



Product Code: AA01

Part Number	Description
<a href="#">08/001/16/000</a>	Three way connector



Product Code: AA01

Part Number	Description
<a href="#">08/001/15/000</a>	Blank end



Product Code: AA01

Part Number	Description
<a href="#">05/100/01/901</a>	Gauze - eliminates air line debris

## Safety Notes

A Type bellow seal couplings are not recommended for use with Minsup standard seal couplings

Warning: Never use A Type couplings for steam service

The use of a Minsup safety locking pin is necessary to ensure that Minsup A Type couplings will not become accidentally disconnected. This ensures that the fittings are properly connected as the pin will not go through the holes in both couplings until the couplings are locked into place

**Dixon**

1300 134 651

customerservice@dixonvalve.com.au

dixonvalve.com.au